

# ALTAİR®

## Modular volumetric water meter Qn 1,5 m<sup>3</sup>/h to Qn 10 m<sup>3</sup>/h

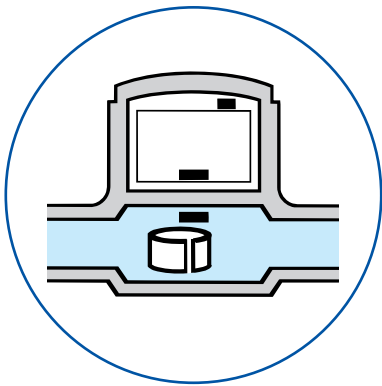
The Altaïr water meter is characterized by its versatility. Its large measuring chamber means that it can be used for submetering or as a main meter. Additionally, it is suitable for different types of water.

Altaïr meets the metrology standard OIML R49 and offers new functions (fraud detection etc...).

Altaïr offers high measuring dynamics, very low start flowrates, low head loss and strong resistance to overflowrates.

Altaïr is compact. Thanks to its low height, it is suited to all types of location (e.g. water-box...).

Altaïr is equipped with a stainer filter for DN 15 and 20. Altaïr is modular and can be fitted with Izar radio system or with a Pulsar pulse emitter at any time, for use with Draco dosing device and Cursa consumption analyser.



# Main technical characteristics

## DESIGNATION

Altair

Calibre DN (mm)	15	20	25	32	40
-----------------	----	----	----	----	----

## MEASURING RANGE (m<sup>3</sup>/h)

Start flowrate l/h	1	1	2	3	3
Min. constructor's flowrates l/h	5	5	20	40	40
Min. approved flowrate l/h	7.5	15/25	25	60	60/100
Transition flowrate l/h	11.25	22.5/37.5	37.5	90	90/150
Nominal flowrate m <sup>3</sup> /h	1.5*	1.5/2.5	3.5**	6	6/10
Maximum flowrate m <sup>3</sup> /h	3	3/5	7	12	12/20
Max. constructor's flowrate m <sup>3</sup> /h	7	7	10	20	20

\* Approval meter Qn 0,75/1/1,5

\*\* Approval meter Qn 2,5/3,5

## EEC-SIM APPROVAL

Class	C all positions
Approval number	FO3G 175
ATEX	on request

## TEMPERATURES AND PRESSURE

Min. and maxi temperature	from 0°C to + 30°C
Max. operating pressure	16 bar

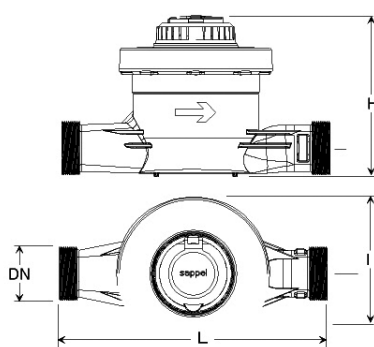
## HEAD LOSS

Kvs ( $\Delta P=Q^2/Kvs^2$ )	4.24	5	7.4	16.97	20
------------------------------	------	---	-----	-------	----

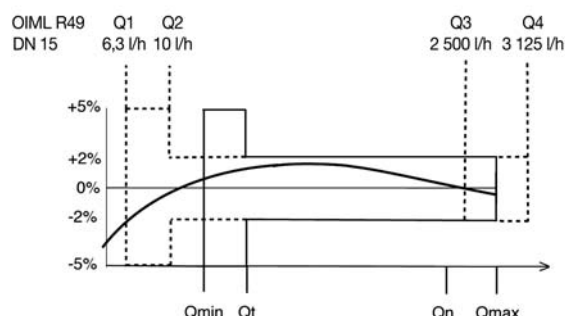
## DIMENSION, WEIGHT AND CONNECTION

Length L mm	110 ou 170	190	260	260	300
Width l mm	90	90	112	170	170
Height H mm	122	127	160	190	190
Threaded connections	3/4"	1"	1"1/4	1"1/2	2"
Weight kg	1.05   1.2	1.34	2.80	5.25	5.45

## ENCOMBREMENT



## Precision curve



**Options :** Pulse emitter Pulsar : 1 impulse/litre from Qn 1,5 to Qn 10 m<sup>3</sup>/h  
Non-return valve - Connector pair - Glass metal register

Distributed by :

If you have any question, please do not hesitate to contact us :



**HEAD OFFICE** B.P. 10160 - 67 rue du Rhône - 68304 Saint-Louis Cedex - France  
Tel. +33 (0)3.89.69.54.00 - Fax +33 (0)3.89.69.72.20  
Web: www.sappel.com - E-mail: info@sappel.com

**EXPORT** B.P. 10160 - 67 rue du Rhône - 68304 Saint-Louis Cedex - France  
Tel. +33 (0)3.89.69.54.21 - Fax +33 (0)3.89.69.54.22  
E-mail: export@sappel.com