

PULSARpoint

800 series



PULSAR
Process Measurement

800 Series
float switches

Description

The Pulsarpoint 800 range of **liquid level float switches** and accessories offer the user a wide selection of high integrity devices, designed for very reliable operation when controlling the level of non-potable water and sewage. Versions are available to provide alarm control and pump control. The units have all been designed for maximum durability and dependability, and are manufactured to the highest standards.



Operation

Both mercury activated and mechanically activated designs are available. With units capable of switching operating currents from 5 to 13 AMPS, pump up or pump down.

The 800 series **pump control switches** have a wide angle operation to enable user adjustable pumping ranges from one pump switch.

The 800 series **alarm control switches** have narrow angle operation to provide precise switch on and off points to activate pump control panels and alarms.

Many types are available which are not sensitive to rotation or turbulence. Versions to cater for confined spaces are also available including a double float package and also a system with a float guide.

The floats are manufactured from high impact and corrosion resistant PVC or polypropylene and are suitable for liquid temperatures up to 60°C.

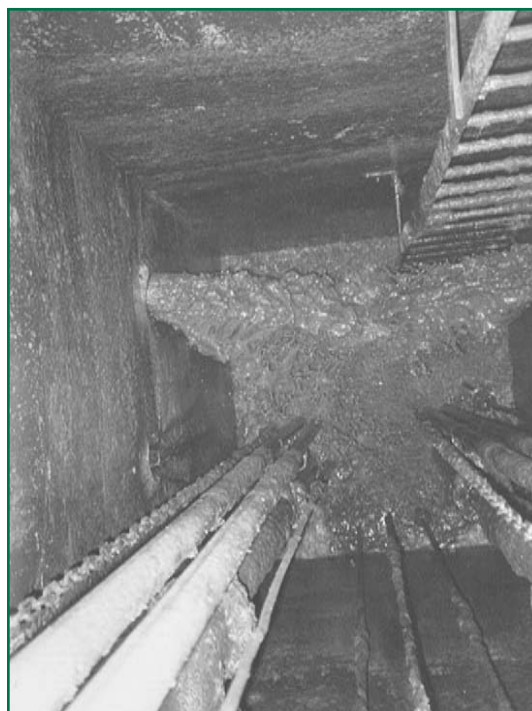
A specially designed seal bonds the cable into the float, preventing water ingress, whilst allowing flexibility and ensuring reliable operation. Pulsarpoint 800 series float switches have a typical working life of over 1/2 million operations.

Internal weighted and cable weighted versions are available, as well as Single Pole Double Throw output for pump up or pump down operations from one switch.

The Pulsarpoint 800 series float switches are ideal for the hostile environment, as shown in this sewage pumping station.

Features

- High quality, high reliability, low cost
- Up to 13 AMP current switching (specials available)
- Adjustable pumping range
- Pump up or pump down
- Resistant to turbulence or rotation
- Mounting straps & cable weights included where applicable
- Supplied as standard with 3m or 10m leads, (longer lengths are available on request)
- Two year warranty



Pulsar Process
Measurement Ltd
Oak House
Bromyard Road
Worcester
England
WR2 5HP

Tel: +44 (0)870 6039 112
Fax: +44 (0)870 6039 114
info@pulsar-pm.com
www.pulsar-pm.com

Pulsar Inc
PO Box 800
Shalimar
Florida 32579
USA

Tel: +1 850 609 1777
Fax: +1 850 651 4777
info@pulsar-us.com
www.pulsar-us.com

Specifying information and wiring diagrams are available on request from Pulsar

Technical Specification: **Pulsarpoint 800 Series** *float switches*

800-20 Pump Master – Pump Switch



A most versatile, **mechanically activated** wide angle **pump switch**, not sensitive to turbulence. Controls pump control panels or control pumps directly up to 1.35kW at 115V AC and 2.59kW at 230V AC. Maximum continuous current 13 AMPS, maximum starting current 85 AMPS. Pump up and pump down or SPDT versions. Available with cable weight option.

The float is 7.75cm dia x 9cm and is manufactured from PCV. Adjustable pumping range from 18cm to 91cm.

800-50 Micro Master – Pump Switch



A low cost **mechanically activated pump switch** designed for use in turbulent conditions. Controls pumps up to 10 AMPS at 115V AC, 8 AMPS at 230V AC. Pump up, pump down or SPDT versions.

The float is 7cm dia x 12.3cm and is manufactured from high impact resistant polypropylene. Adjustable pumping range from 20cm to 91cm.

800-60 Sensor Float – Control Switch



A **mercury activated**, narrow angle **control switch** designed to accurately activate pump control panels and alarms. There is a smaller version for operation in confined spaces. Switches currents of up to 5 AMPS AC.

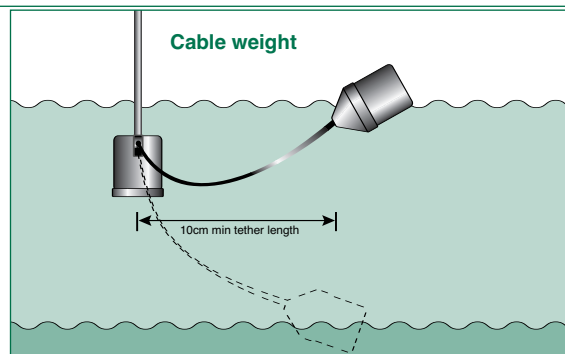
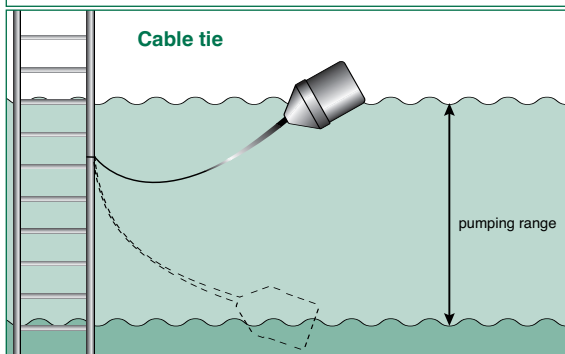
Switch operating range typically ± 1 cm from horizontal. Pump up, pump down or SPDT versions are available with the pipe clamp, integral weight (not SPDT) or cable options. The float is 8.6cm dia x 11.6cm and is manufactured from PVC.

800-70 Signal Master – Control Switch



A low cost, **mechanically activated** narrow angle **control switch** designed to accurately activate pump control panels and alarms. Switches currents of up to 5 AMPS AC.

Switch operating range typically ± 4 cm from horizontal. Pump up, pump down or SPDT versions are all available with pipe clamp or cable weight options. The float is 7.2cm dia x 8.7cm and is manufactured from high impact resistant polypropylene housing.



Our policy is one of constant development and improvement. Pulsar reserve the right to amend details as necessary.

Represented by

**Pulsar Process
Measurement Ltd**
Oak House
Bromyard Road
Worcester
England
WR2 5HP

Tel: +44 (0)870 6039 112
Fax: +44 (0)870 6039 114
info@pulsar-pm.com
www.pulsar-pm.com

Pulsar Inc
PO Box 800
Shalimar
Florida 32579
USA

Tel: +1 850 609 1777
Fax: +1 850 651 4777
info@pulsar-us.com
www.pulsar-us.com



Certificate No. 950136